

Logistical Management Specialists

Concord Cranes is a crane hire, rigging and specialised transport company that is a part of Industrial Services Holdings, otherwise known as InServe. We are a preferred provider of professional, and compliant lifting services that are customised to fit our clients' needs. Distributed between our branches we have a total fleet size of 176 cranes ranging from 8ton to 750ton. Along with our crane hire companies, we also have a transport company which has been involved in major projects throughout South Africa.

Together with our InServe partners we have formed a Logistical Management Proposal to assist in turn key fashioned projects. Below is a basic breakdown of what our proposal offers, to assist in making our clients work more efficient and minimizing risk, by avoiding the use of multiple suppliers.

Logistical management

1. Full commitment in the planning stages of the project to ensure all factors relating to the delivery and installation of goods are foreseen.
2. Up-to-date tracking of all deliverables via an easily accessible online platform.
3. On site supervision by experienced personnel to ensure the safe and controlled delivery of goods



Turnkey benefits

Any delays in the delivery of goods to site will have no cost implications for the teams awaiting the delivery of the goods to site – subject to the use of our rigging teams and transport.

The supply of local cranes and rigging equipment from our local crane hire company's – Concord Cranes Group

The supply of access equipment and forklifts from our local trusted equipment solutions company – Goscor Group of Companies

The supply of trucks via our transport company - Material Handling Logistics

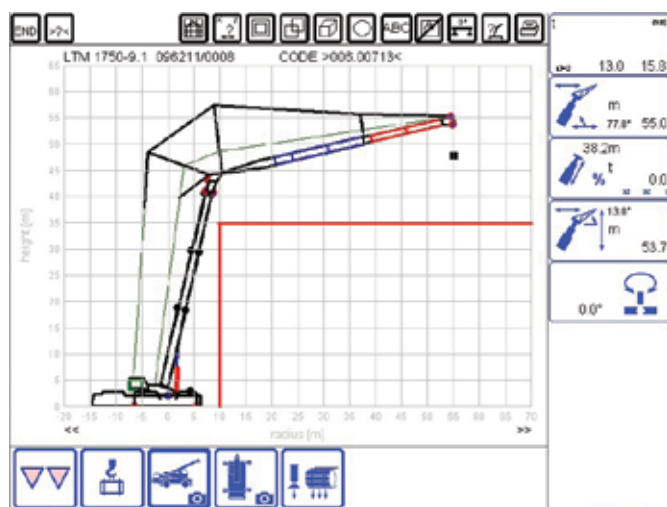
The supply of professional personnel from all fields, with the advantage of being connected through one single Industrial Services Company – InServe, ensuring a good level of communication and understanding is maintained throughout the project.





What we offer as a contribution to a turnkey solution:

1. Transport solutions (E.g. Abnormal, containerized, general cargo)
2. Mobile crane hire solutions
3. Computerized lift planning studies
4. Qualified riggers and crew
5. Trusted equipment solutions
6. Formwork and scaffolding
7. Formwork and scaffolding design work
8. On-site supervision
9. On-site safety officer/s
10. Comprehensive safety files
11. User friendly online platform for the tracking of road freight



Trust With Every Rental

At the Concord Cranes Group, we are there for **LIFE**. Loyalty, integrity, foresight and excellence are what keep some of SA's largest companies coming back to us, time and time again.

Our nationwide footprint coupled with a passionate team enables us to service our clients with modern cranes equipped with the latest in safety and mobile crane technology.

With our national footprint and experience we assure you that we are capable of providing you with an **EFFECTIVE** and **QUALITY SERVICE**. We look forward to having the opportunity to be part of your future projects and ask that you please contact us with any requirements relating to the supply of industrial equipment/services.